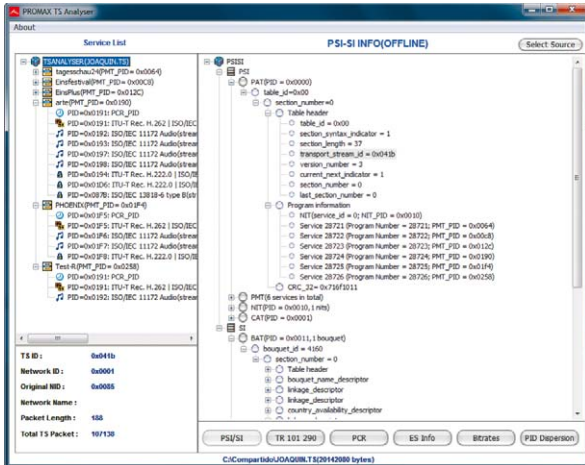


TS ANALYSER - FREE TS ANALYSER



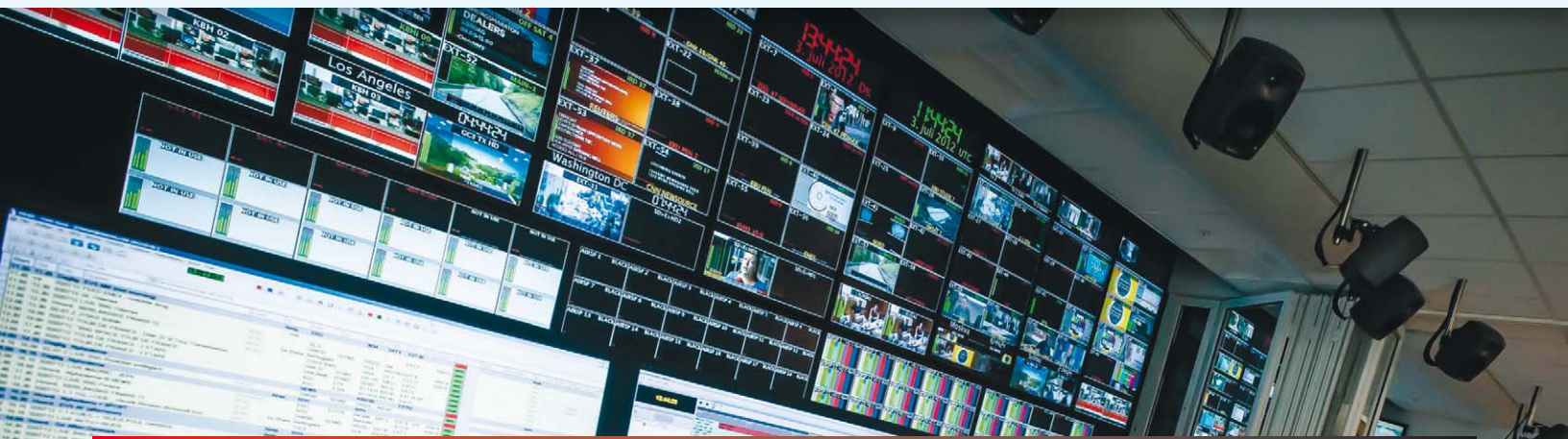
TS ANALYSER is a free software application that allows deep, low-level analysis of MPEG-2 transport streams in DVB digital television.

From a file in .TS or .MPG format, the **TS ANALYSER** loads the transport stream and displays it in a tree structure with the PSI/SI tables. Specific information is shown in tables that are mandatory by DVB and MPEG-2 standards, such as PAT, PMT, NIT, BAT, SDT, EIT...

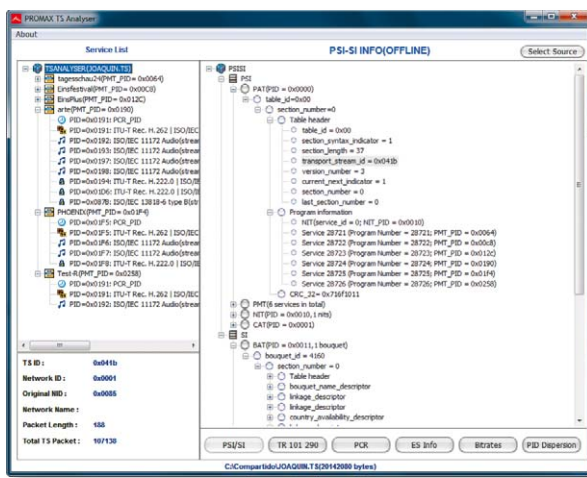
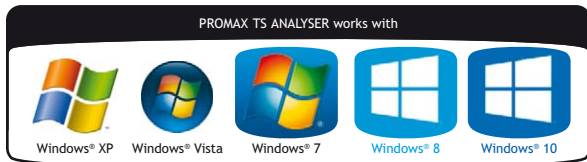
The **TS ANALYSER** shows in a chart the PID usage, the video bitrate, the audio bitrate, etc.

The **TS ANALYSER** software for Windows PC is specifically designed to detect errors in DVB transmissions in accordance with TR 101 290 guidelines, for example in equipment and systems tests, in software development ... And also for learning purposes, where it can be a useful tool to understand how digital television systems work.

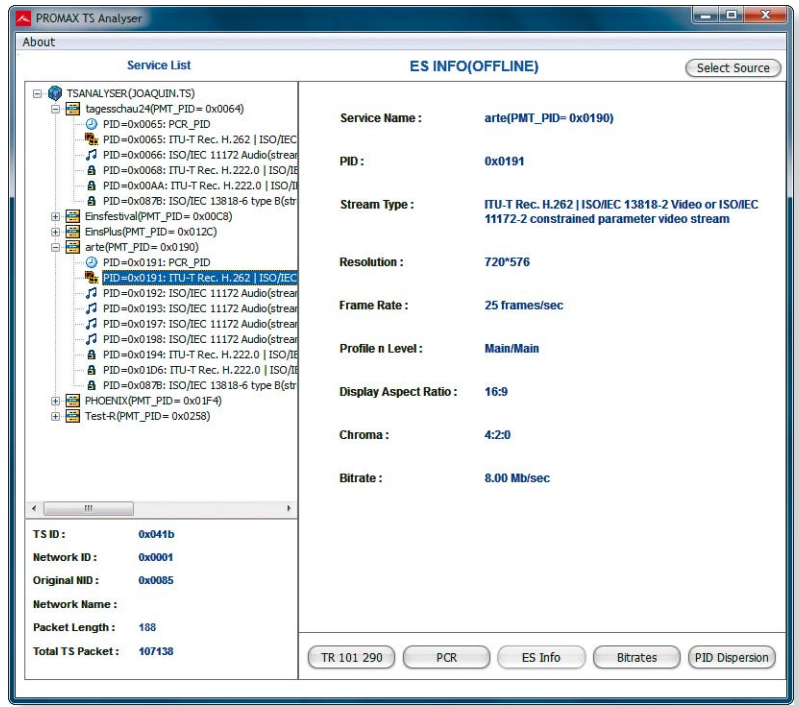
- ✓ **PSI-SI information for each service in a tree structure**
- ✓ **TR 101 290 errors. Information about PID propagation**
- ✓ **Absolute PCR value graph for each service**
- ✓ **Audio/Video bitrate graph for the whole TS or for each service**
- ✓ **Designed for Microsoft Windows XP (Service Pack 3), Vista, 7, 8 and 10**
- ✓ **Compatible with transport stream recordings captured by PROMAX field strength meters and generally any standard TS file captured with a transport stream recorder device**



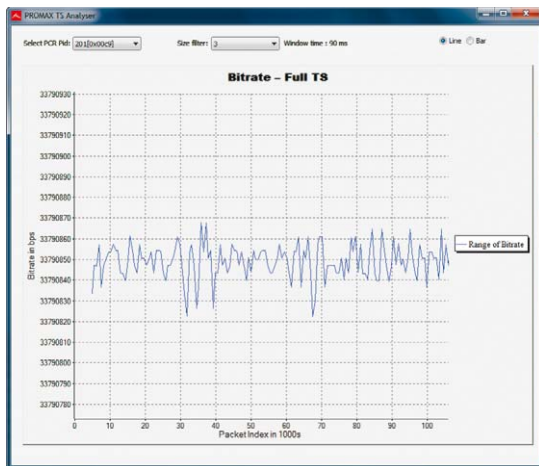
TS ANALYSER - FREE TS ANALYSER



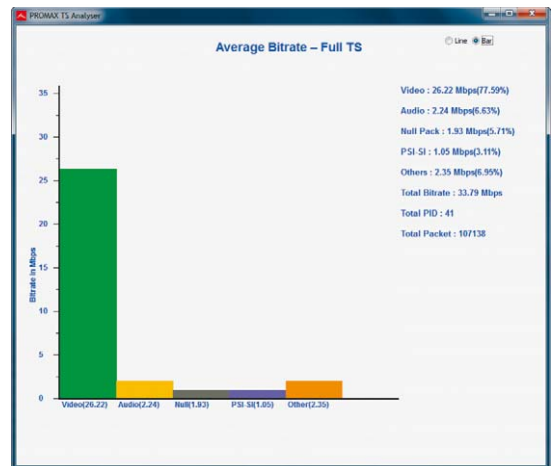
Transport stream content in a tree structure



"Elementary Stream" information (independent audio or video stream contained into a TS)



Bitrate of a service through the time



Average bitrate of a service